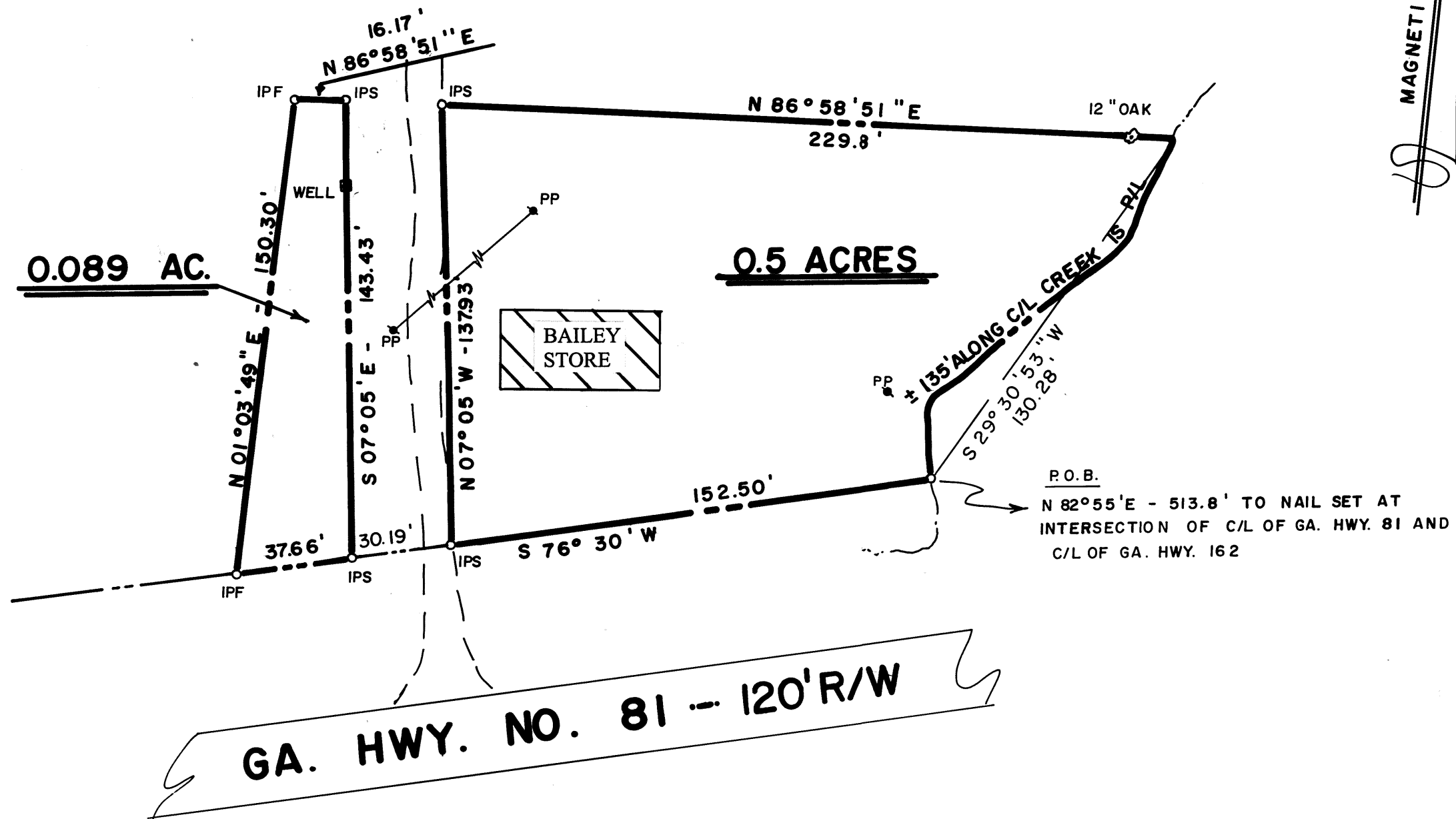


THE FIELD DATA UPON WHICH THIS PLAT IS BASED HAS A CLOSURE
 PRECISION OF ONE FOOT IN 10,000 FEET AND AN ANGULAR
 ERROR OF PER ANGLE POINT AND WAS ADJUSTED
 USING RULE. THIS PLAT HAS BEEN CALCULATED
 FOR CLOSURE AND IS FOUND TO BE ACCURATE WITHIN ONE FOOT
 IN 10,000 FEET.



IN MY OPINION, THIS PLAT IS A CORRECT
 REPRESENTATION OF THE LAND PLATTED
 AND HAS BEEN PREPARED IN CONFORMITY
 WITH THE MINIMUM STANDARDS AND
 REQUIREMENTS OF LAW.

Louie D. Patrick

GA. R.L.S. NO. 1757

PATRICK & ASSOCIATES, INC. 928 BLACKLAWN RD.
 CONYERS, GEORGIA
 PH.: (404)-483-9745



SURVEY FOR

CLAUDE BAILEY

LAND LOT 99 ... 10th DISTRICT
NEWTON COUNTY, GEORGIA

SCALE: 1" = 40' DATE: JAN. 24, 1991

JOB NO. 2293 - DWG. NO. 9669